

Sami G. Mekanna

Project Director



PERSONAL INFORMATION

Nationality: Lebanese

Birth date: 10- 02-1970

Marital Status: Married, 3 children (M-22y,M-19y,F-14y)

Address: Current Resident of Cyprus, Larnaca
Home Address, Beirut, Hazmieh, Lebanon

Mobile: +357-96-116535 (Cy)

Mobile: +961-3-860658 (Leb)

Landline: +961-5-462860 (Leb)

Email: sami_mek@hotmail.com, sami@promd-group.com

EDUCATION AND MEMBERSHIPS

Civil Engineer, Holder of **Master's Degree in Public works**, 1994- Lebanese University – Roumieh.

Member of Lebanese order of Engineers & Architects (OEA - Beirut).

Languages: Fluent in **English** and **French** | Very Good in **Greek** | Native in **Arabic**

Computer Skills: Cad, Robot, Microsoft Office, Microsoft Project

PROFESSIONAL SKILLS

- Seasoned Professional with extensive experience in managing various large-scale complex construction projects since more than 26 years with reputable General Contractors in the MENA region.
 - Possess excellent Leadership and communication skills.
 - Maintain strong relationships with project stakeholders and industry contacts
 - Provide project support and delegation to the team, scope creation, customized construction methodologies, planning and scheduling.
 - Manage project schedules, and provide regular progress performance reports based on earned value management.
 - Develop and manage budgets, cost reporting to the team on current budget standings.
 - Anticipate mitigation plans for schedule Overruns and delay events impeding the way to completion.
 - Possess in-depth knowledge of international construction laws and forensic analysis of claim events.
 - Identify and assess project risks, Update and manage the response.
 - Implement Quality Control plans, Safety and HSE Procedures.
 - Ensure Regulatory Compliance to contract documents and legal requirements.
 - Proven expertise and technical knowledge of building trades, materials, and international codes.
-

WORK EXPERIENCE

Director: Pro MD Group – Cyprus

11/2020 ... Present

Partner and Director of a project management company registered in Cyprus, undertaking construction management services to Developers and Main Contractors in Large scale residential and commercial projects. The company in alliance with 2 other companies deals as well with Business Management in the Real Estate sector.

ACC– Med Europe Arabian Construction Company - General Contractor

03/2017 to 10/2020

Project: **ONE Tower**–The Tallest residential tower in Cyprus and seashore of Europe

Position: **Project Director**

Owned by Pafilia and Designed by UK based WKK Architects and Bureau Happold alongside with many renowned specialized consultants, The One Tower Limassol is considered the landmark and Iconic residential project of the island.

the project 52,000 m² BUA, (4B+G+39) comprises 84 prestigious ultra-modern flats which includes Apartments, Duplexes and a Penthouse, combines between state-of-the-art smart systems and high end finishing residential spaces, a SPA area with a large green landscaped area. The tower curved allure and transparent façade minimal systems is crowned on top of the building with a huge steel structure clad with GRC panels rising at 180m above ground.



Key Contribution: Led, managed the construction of the 44 stories tower worth **\$105 Million**.

MAN Enterprise Beirut | General Contractor

2012 - 2017

Project: **SAMA BEIRUT Tower** – Tallest Residential Tower in Lebanon

Position: **Project Director**

Owned by Antonios Projects, the Sama Beirut Project innovative 60 stories design, (8B+G+52), 200m high, with total built up area of 90,000 m² comprises 13 office floors, 39 residential floors embracing flats, Duplexes, Triplexes and combines between prestigious high end finishing interiors with full home automation systems, an ultra-modern health club and a unique unitized curved façade.

The Sama Beirut project is one of the first Green – Leed Certified building in Lebanon designed by Erga International alongside with many international reputed sub-consultants on board pertinent to fire safety, façade, waste management, traffic, landscape, lighting...

Key Contribution: Spearheaded the construction of the 60 stories tallest tower in Lebanon, worth **\$125 Million**.



MAN Enterprise Abu Dhabi

2009 - 2012

Project : **Rotana Capital Centro Hotel – Abu Dhabi**

Position: **Project Manager**

The Centro Hotel owned by Crystal Hospitality Investment is one the 3-hospitalities projects developed by Rotana in ADNEC area (Abu Dhabi National Exhibition Center) with 414 rooms and Studios, 4 restaurants and a large recreational area. This business hotel is tailored made as per Rotana luxurious renown standards of hotel chain in terms of space optimization, services, entertainment and amenities.

Designed by GA Architects (Ghazi Awad) the modern business hotel comprises (4B+GF+20) and occupies 48,000 m² as built-up area.

Key Contribution: Led the construction of the Rotana Hotel, worth **\$85 Million**.



SEG Qatar: Société d'Entreprise et de Gestion | General Contractor

2005 - 2008

Project : **Qatar Navigation Tower**, one of the Tallest landmark Tower in Qatar

Position: **Project Manager**

Owned by Naqilat Qatar, the prestigious tower situated in the Doha west bay area occupies an area of 110,000 m² combining 52 stories, 215m high commercial tower, 55,000 m² of car park spaces and a recreational area in an ancillary building.

Designed by MZ&P and managed by Hill International as Engineer, the project is considered a Landmark due to the curved unique Sailing shape of the tower and the vast area of stainless-steel cladding.

Key Contribution: Oversaw the construction of the 54 stories Qatar Navigation Tower worth **\$120 Million**.



Additional Experience with General Contractors

➤ *Worked at **SEG Beirut**: 2001 to 2005*

- Civil Works manager: **Four Seasons Hotel** (6B+G+28)
- Civil Works manager: **Marina Towers Beirut** (3B+G+33)
- Project Manager at **ACHRAFIEH 784** Residential Tower (5B+G+19)

➤ *Worked at **ED ZUBLIN AG** – German General Contractor, 2000-2001*

- Site Manager handling the construction of the main central Technical building supplying MEP services and other utilities to 14 universities in the main Campus of the Lebanese University in Hadet.

➤ *Worked at **I.D.C - Internationale de Développement et Construction**: (1996-2000)*

- Project engineer overseeing the construction of the luxurious landmark Verdun 732 commercial center in Verdun- Beirut (5B+G+25)



October 2012 9

4 Doka SKE enabled the entire exterior climbing formwork to be raised as a single platform, bringing all 4 sides of the core wall safely to the next level in 20 minutes or less.

The facts

JOB SITE Sama Beirut
LOCATION Lebanon
CUSTOMER MAN Enterprise
SYSTEMS IN USE Large-area formwork Top 50, Dokaflex tables, automatic climbing formwork SKE50 and SKE100 for CPB

Sama Beirut Surging Toward Completion

Beirut will soon have the new tallest tower in the country – SAMA Beirut, standing at 186 m. Doka engineered a solution for the highest number of re-uses with a design adopted from Burj Khalifa. The building will be the city's first landmark of this caliber.

For this build which started in 2011 with an expected completion in 2014, formwork planning challenges included taking into account assembly at an offsite location, an extremely tight construction schedule, and coping with heavy steel reinforcements (seismic design) and deep excavation work.

Hydraulic system the perfect choice
 Doka automatic climbing formwork SKE50 was the key formwork solution for the project. With the system's utmost flexibility, it gave the client the ability for fast and efficient climbing of the main core wall. A cycle of seven days was reached easily, taking into consideration how quickly the site crew familiarized themselves with the system. Around 750 m² of the Large-area formwork Top 50 panels were coupled with the SKE system to give the shafts very easy forming sequences, and fair faced concrete as well.

Equalizing speed of vertical and horizontal elements
 The perfect combination of SKE50 & SKE100 climbing brackets has been chosen, to meet the requirements of an economical system. Also meeting the requirement for lifting the very heavy loads wherever required, such as a concrete placing boom or large inside shaft cells. The high load capacity of 10 metric tons per bracket and the tall formwork-platform scaffolds allow work to proceed simultaneously, making it possible to "de-link" the forming and rebar operations. Each shaft cell has its own automatic climbing platform - allowing the time-intensive rebar installation works for the next level to start immediately after pouring of concrete - without waiting for formwork stripping, cleaning & climbing. More than 2,000 m² of Dokaflex table-forms were utilized in order to keep casting the horizontal elements in step with the rate of vertical progress.

The solution!

For this luxurious high rise tower consisting of 8 office floors and 75 apartments, Doka supplied all formwork for typical floor beam & slab support and 100 % of all corewall formwork + SKE50 platforms.



Samy Mekanna
Project Manager
Sama Beirut

The professional

MAN Enterprise was able to reach the project's requirement because the Doka system used less manpower. We were able to achieve on time the pouring of vertical and horizontal elements as well."

SAMA BEIRUT TOWER - LEBANON

Formwork report



Doka Gulf FZE

Issue 2, 2007

Qatar Navigation Tower – Doka Automatic Self-climbing equipment leads the way



The different formwork systems supplied by Doka are in use at Qatar Navigation Tower as shown in the photo

Société d'Entreprise & de Gestion Qatar (SEG Qatar) is currently constructing the Qatar Navigation Tower at Al Wahda Road in the West Bay area. The tower comprises 52-storey office floors including 2 technical floors + 6-storey car park + recreation area.

To form the columns and the shear walls, Doka supplied Top 50 wall formwork combined with Climbing Brackets 150 F for external climbing platforms. Two sets of Dokaflex Tableforms with Transport Devices are in use for the typical floor slabs with a total formwork area of 2,288 m².

For the core wall, Top 50 wall formwork with SKE 50 Automatic Self-climbing equipment are in use. With a typical floor height of 3.80m, the total wall formwork area is 1,130 m².

"The combination of vital factors like accessibility, product superiority, reliability, and timely site supervision made SEG Qatar trust Doka for our formwork requirements. Doka supports our delivery program with timely supply of materials," stated Sami Mekanna, Project Manager, SEG Qatar.

"With this project, the use of Doka SKE Automatic Self-Climbing equipment is definitely improving our construction schedule," Sami added.

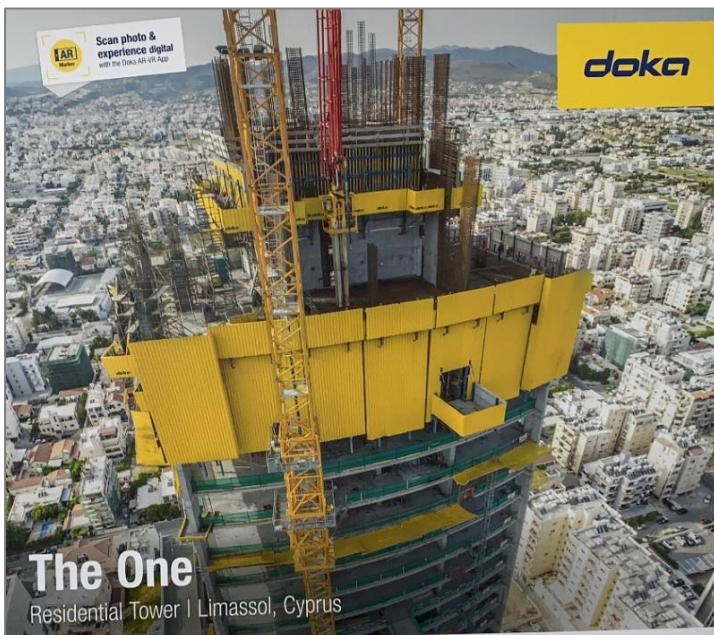
Contractor: Société d'Entreprise & de Gestion Qatar (SEG Qatar)



Samy Mekanna
Project Manager

Doka Gulf - Your Local Formwork Partner

NAVIGATION TOWER – DOHA, QATAR



The One
 Residential Tower | Limassol, Cyprus

PAFILIA ONE TOWER – LIMASSOL, CYPRUS